

PRESS RELEASE
KASHIMA ARTS


October 2018

Art sales
exhibition

美祭

BISAI

Sat, October 20th – Sun, November 4th



Kano Hogai "Madonna on the altar"
Watercolor on paper, framed,
appeared in an art magazine Sansai vol226,
published by Sansaisha
27x36cm/52x65cm
¥1,200,000

KASHIMA ARTS

bisai

24

<Opening> Japanese Art Sales exhibition 「BISAI」

Featuring over 380 works by the masters!
 Saturday, 20 October – Sunday, 4 November, 2018
 At Kashima Arts (3-3-2 Kyobashi Chuo-ku, Tokyo)

Kashima Arts proudly presents our biannual Japanese art sales exhibition “BISAI” from Saturday, 20 October - Sunday, 4 November, 2018.

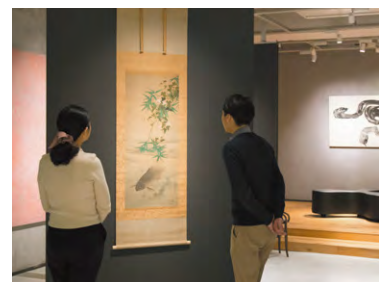
The exhibition features over 380 pieces of Japanese art by masters such as Ito Jakuchu, Yokoyama Taikan, Foujita Tsuguharu, Saigo Nanshu and more. Many of the works will be displayed in our gallery and available for purchase. For those who are not in Tokyo, our special catalog listing all the works will be available to check out the artworks at home.

This is a great chance to find the Japanese art for your home.

▶ 2018 Autumn BISAI - Exhibition Highlights -

1 See the masterpieces without glass casing

The most appealing point of BISAI is to see the artworks directly without glass casing. Feel the elegance and powerfulness of the artworks.



image

2 Special Exhibition catalog available

The 24th BISAI season will have 2 volumes: special edition and standard edition. The special edition features the exclusive selection of Japanese art. The beautiful images of interior design with Japanese art makes you visualize how artwork can enrich your home décor. The standard edition lists great selection of Japanese art that are approachable even for beginner collectors. These catalogs are given away for free for the new customers.

3 Check out modern Japanese paintings

BISAI introduces wide selection of Japanese art from Edo to modern, and one of the notable highlight of this season is the selection of modern Japanese paintings. Works by masters such as Yokoyama Taikan, Takeuchi Suiho, Yasuda Yukihiko, Uemura Shoen, are featured in this season's BISAI, including a rare piece “Madonna on the alter” by Kano Hogai. Works by painters of western style such as Matsuda Shohei, Kazuki Yasuo and Camoy Rey are also introduced in this catalog.



Yokoyama Taikan “Mt Fuji in summer”
 Color on silk, with a box signed and sealed by the artist, Yokoyama Taikan Memorial Hall Registration #Re-11
 41×50cm/144×65cm
 ¥15,000,000

▶ Information

BISAI will change in 2019!

Starting from 2019, our current BISAI will upgrade into “BISAI-SEN.”

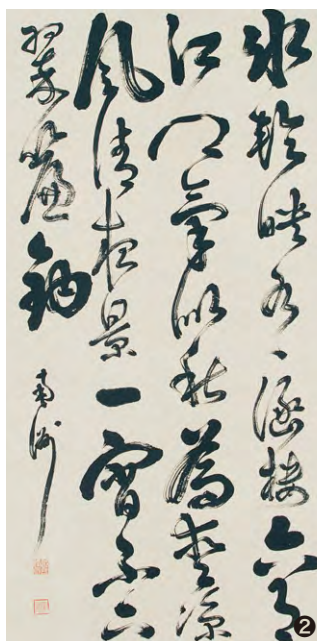
BISAI-SEN will be the luxurious art catalog which introduces exclusive selection of Japanese art.

▶ Featured Key works



❶ Ogata Gekko "Fujin and Raijin (god of wind, god of thunder)"

A two-folding screen, slight color on silk,
139x69cm/167x168cm
¥4,500,000



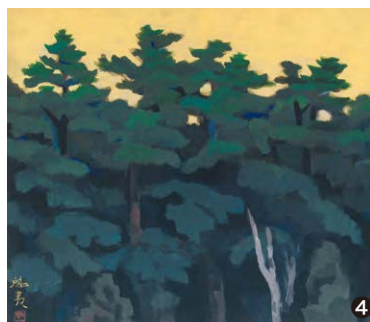
❷ Saigo Nanshu "Calligraphy"

Ink on paper,
with a certificate of authenticity by Saigo Nanshu Kenshokai,
133x62cm/199x76cm
¥2,800,000



❸ Matsuda Shohei "Flounder"

Oil on canvas (size 4), framed, 23x32cm/42x51cm
¥2,200,000



❹ Higashiyama Kaito "Forest"

Color on paper, with a board signed and sealed by the artist, framed,
37x45cm/58x65cm
¥13,000,000



❺ Ito Jakuchu "Willow and crested myna"

Ink on paper, exhibited at "Ito Jakuchu - Another World-"
in Chiba City Museum of Art and Shizuoka Prefectural Museum of Art,
102x28cm/184x40cm
¥9,000,000

*The price includes tax

▶ Exhibition Info

Schedule ▶ Saturday, October 20th to Sunday November 4th, 2018

10:00 - 18:00 *Open every day

Location ▶ Kashima Arts 3-3-2 Kyobashi Chuo-ku, Tokyo

1min walk from Tokyo Metro Ginza line, Kyobashi Station, exit 3

2min walk from Tokyo Metro Yurakucho line, Ginza Ichome station, exit 7

6min walk from JR Tokyo station, Yaesu South exit

URL ▶ <https://www.kashima-arts.co.jp/events/index.html>



[Company info]

Company Name: Kashima Arts Co., Ltd.

Address: 3-3-2 Kyobashi, Chuo-ku, Tokyo 104-0031, JAPAN

URL: www.kashima-arts.co.jp

[Inquiry]

Kashima Arts Co., Ltd. (PR: Watanabe)

Tel: 03-3276-0700 Fax: 03-3276-0701

e-mail: n-watanabe@kashima-arts.co.jp